

Two Systems

of

FSC

(featural syllabographic characters)



Jongtae Kim 

Working at TRS in
Seoul
As a Korean Sign
Language
Interpreter

What is the SignWriting?

What does it mean in graphetics?

Two Systems have the same characteristics.

1. syllabographic characters
2. featural characters

syllabographic

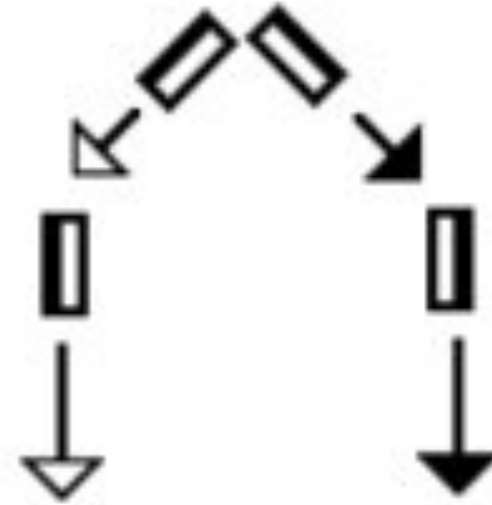
Hangul

vs

SignWriting

집

It means the house in Korean.

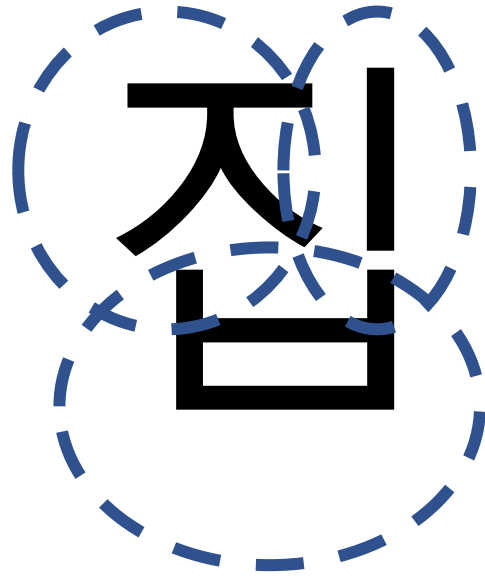


It means the house in SignWriting.

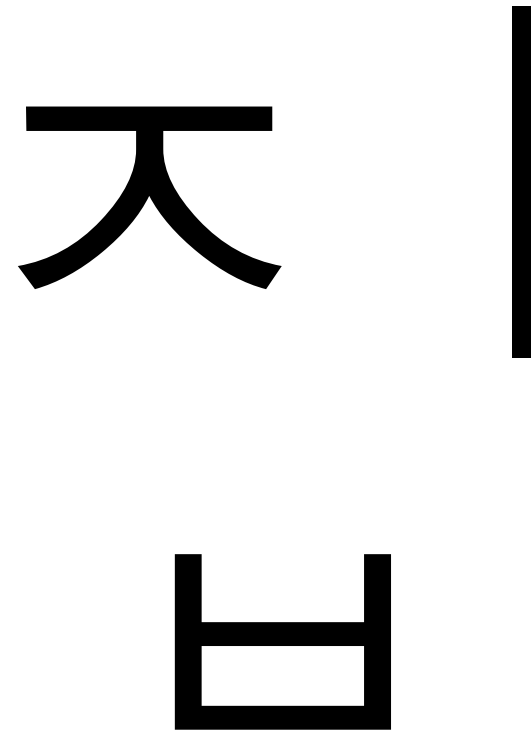
syllabographic

first letter

middle letter



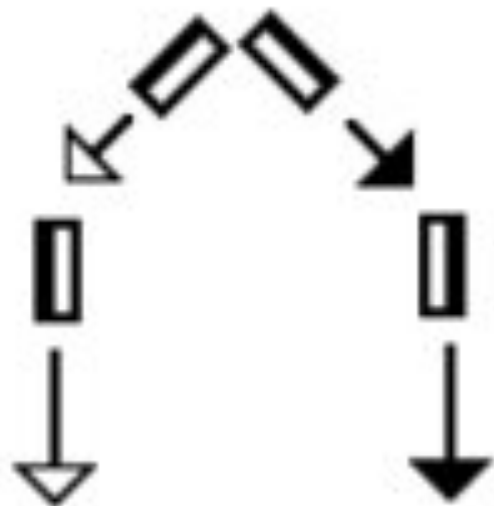
last letter



We don't write it like ㅈ | ㅍ | ㅅ.

No Serial notation

syllabographic



We write it like this.

$\mathbf{B}_{\wedge >} \mathbf{B}_{\wedge <} \emptyset^{\div \wedge |}$

“ $\square \triangle \circ \chi \downarrow$

$\mathbf{\Pi} \sigma \sigma \times \langle \rangle \sqrt{\quad}$

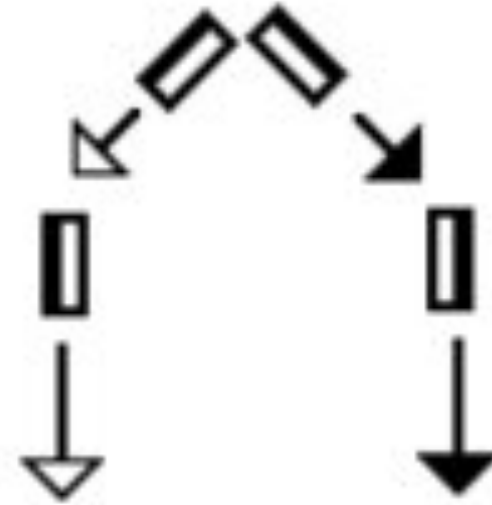
$\cap / \cap / \exists \downarrow \approx$

syllabographic

Similarity Hangul and SignWriting : Syllabographic character

집

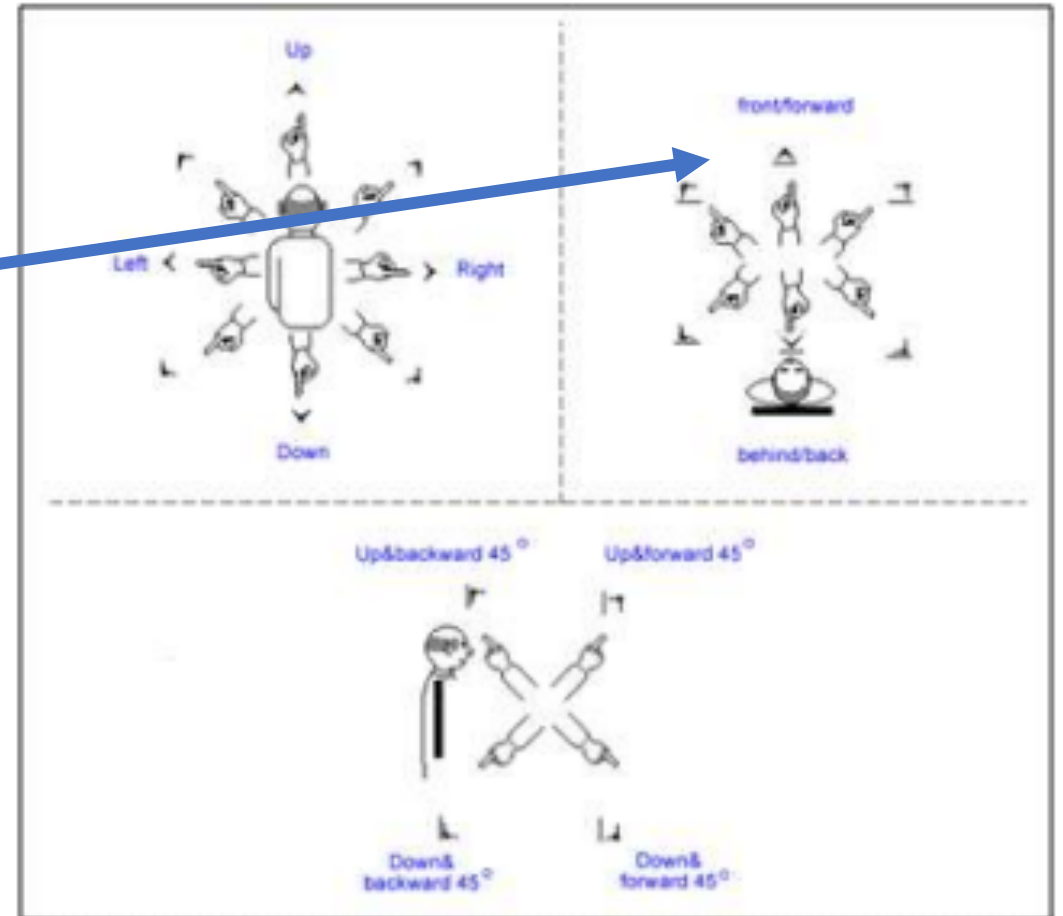
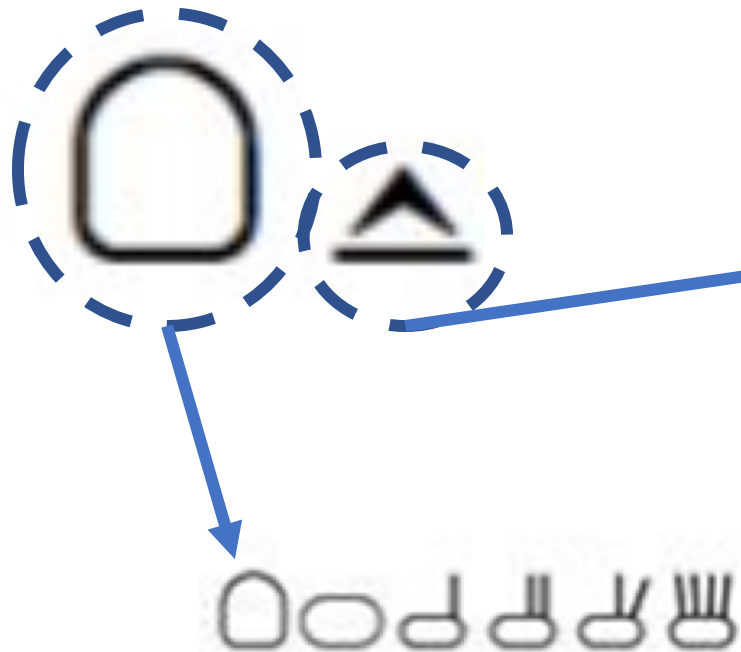
One syllable



psudo one syllable

syllabographic

Serial notation of HamNoSys



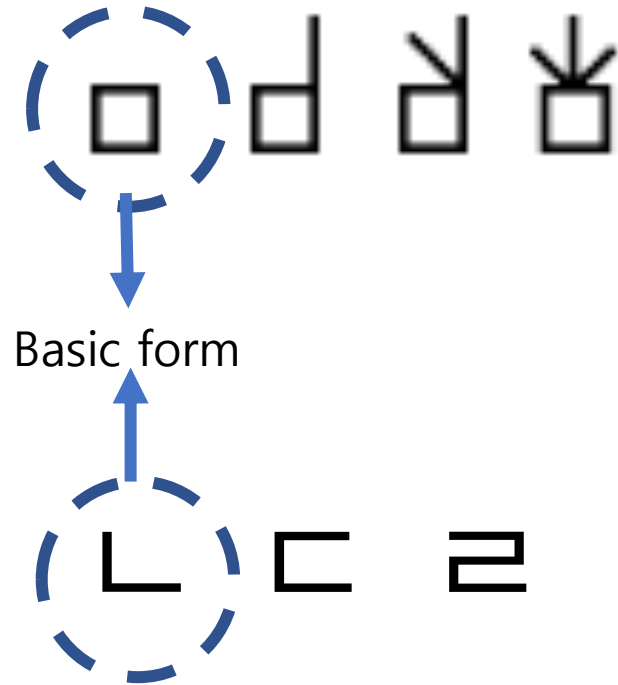
o : All | one notation

It has two characteristics. (handshape and origination)

syllabographic

	Shape of hands	Place of hands	Origination of hands	Movement of hands	Non-Manual Signals
Shape of handshape	○		○		
Face, body, arms		○			
Movement, Dynamics				○	
Non-Manual Signals					○

Similarity Hangul and SignWriting : Featural character



ㅁ	*	◀
ㅂ	•	○
ㄷ	↑	☺
ㄹ	↑	☹
ㅅ	↑	○
ㅈ	↻	○
ㅊ	↻	—
ㅌ	↻	×
ㅍ	↻	⊗
ㅍ	↻	==

무성	ㅌ	ㅍ	ㅊ	ㅋ	ㆁ	ㄴ	ㄷ	ㄹ	ㅅ	ㅈ	ㅊ	ㅌ	ㅍ	ㅎ
가	갸	갓	갓	갓	갓	갓	갓	갓	갓	갓	갓	갓	갓	갓
나	냐	낀	녀	노	뇨	누	뉴	느	니					
다	댜	더	뎌	도	도	두	듀	드	디					
라	랴	러	려	로	료	루	류	르	리					
마	먜	머	며	모	묘	무	뮤	므	미					
바	뵜	버	벼	보	보	부	부	브	비					
사	샤	서	셔	소	쇼	수	슈	스	시					
아	야	어	여	오	요	우	유	으	이					
자	쟌	저	져	조	조	주	쥬	즈	지					
차	챌	처	쳐	초	초	추	츬	츠	치					
카	카	커	켜	코	코	쿠	큐	크	키					
타	타	터	텨	토	토	투	튜	트	티					
파	파	퍼	펴	포	표	푸	퓨	프	피					
하	하	허	혀	호	효	후	휴	흐	히					

featural



M sound starts from the lips.
ㅁ (미음) for M looks like lips.

S sound starts from the teeth.
ㅅ (시옷) for S looks like teeth.

N sound starts from the back of upper teeth.
ㄴ (니은) for N looks like the tongue at the back of upper teeth.

ㄷ (디귤) for D has the same base of ㄴ because the sound starts from the same place of ㄴ.

Korean characters looks like the places that start at/from.



[Korea] sign in KSL

It shows by the head which is the place the sign starts at.

WYSIWYG

Sign Writing does so.

It shows on the places that start at/from.

It is natural.

Hangul

writing letter unit : 강, 산

consonant and vowel unit : ㄱ, ㅏ, ㅓ, ㅗ, ㅛ, ㅜ, ㅠ

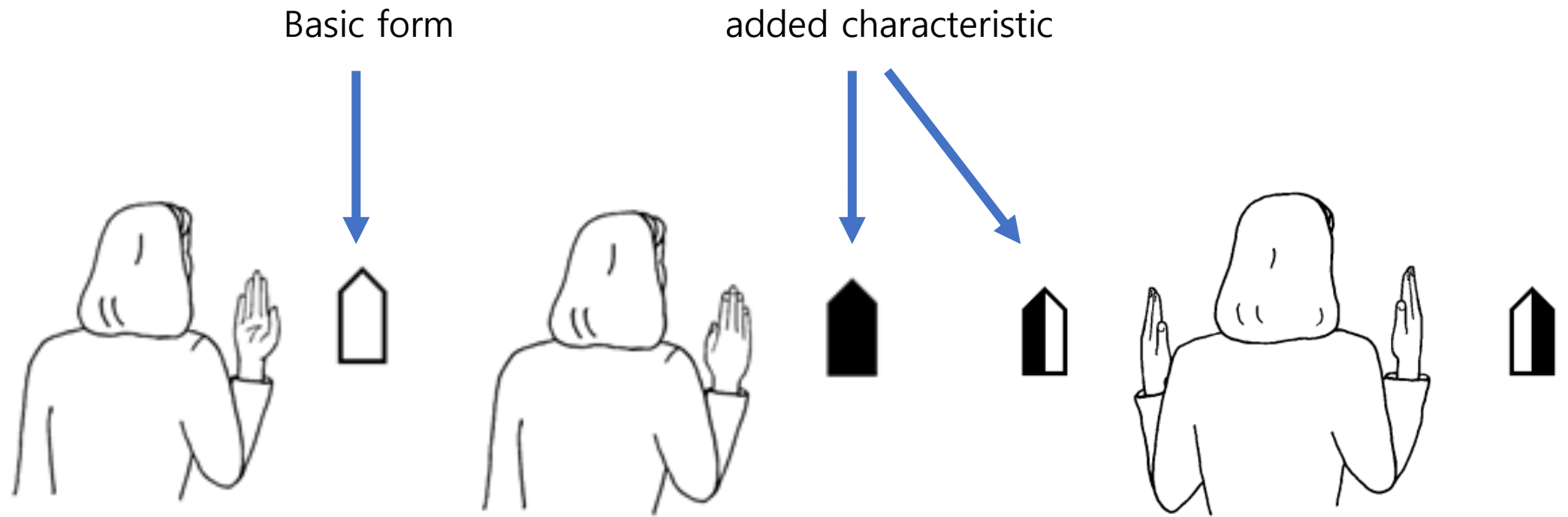
featural unit : ㄷ(ㄴ, ㅡ)/ㅈ(ㅊ, ㅡ)/ㅊ(ㅊ, ㅡ)

→ syllabograph

→ letter

→ basic form and added line

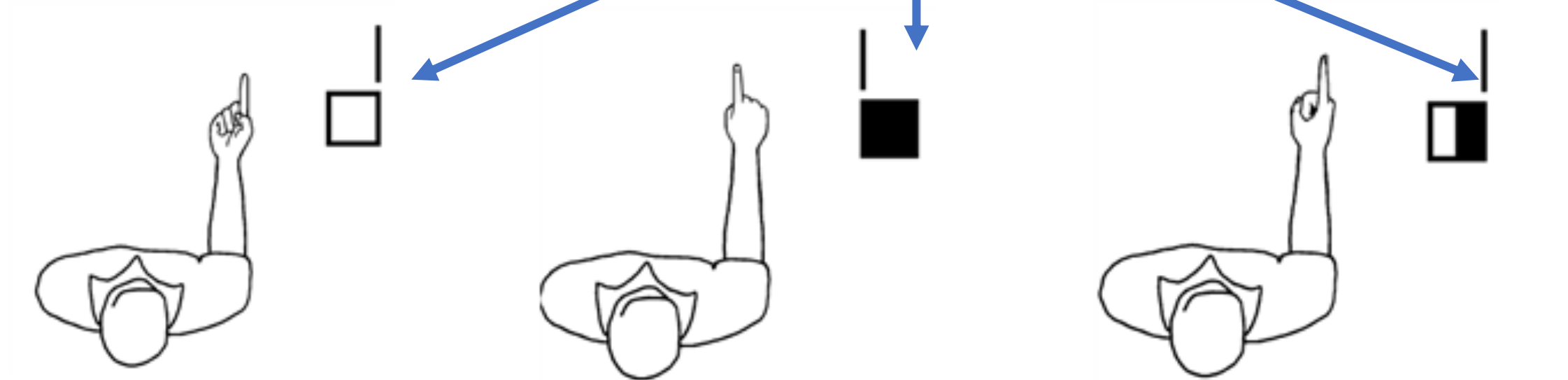
SignWriting



SignWriting

□ ← Basic form

added characteristic



Korean-Hangul is analytically
a featural system.
And it is synthetically a
syllabic system.

-Florian Coulmas



SignWriting is a system of
featural syllabographic
characters